



StarMetro Major Update TDP and COA

Neighborhood Meeting

September 2021

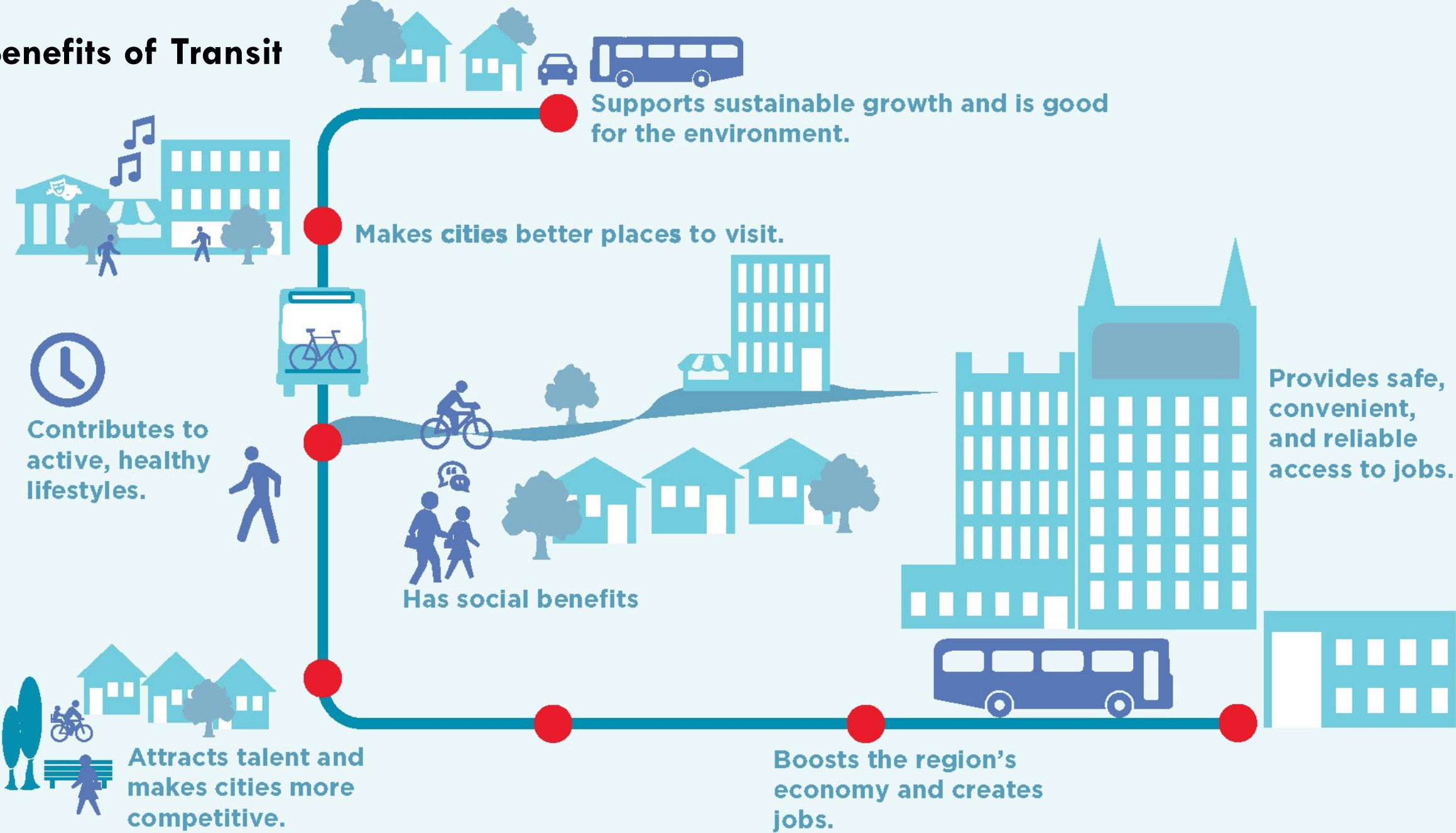


Agenda

- 1 **Benefits of Transit**
- 2 **Overview of StarMetro**
- 3 **Project Goals**
- 4 **Choices and Trade-offs**
- 5 **Moss Route**
- 6 **Next Steps**



Benefits of Transit



StarMetro: Existing System



Fixed Route Services

- **15** weekday routes
- **12** Saturday (& holiday) routes
- **4** Sunday & night routes
- **8** FSU campus routes



Other Services

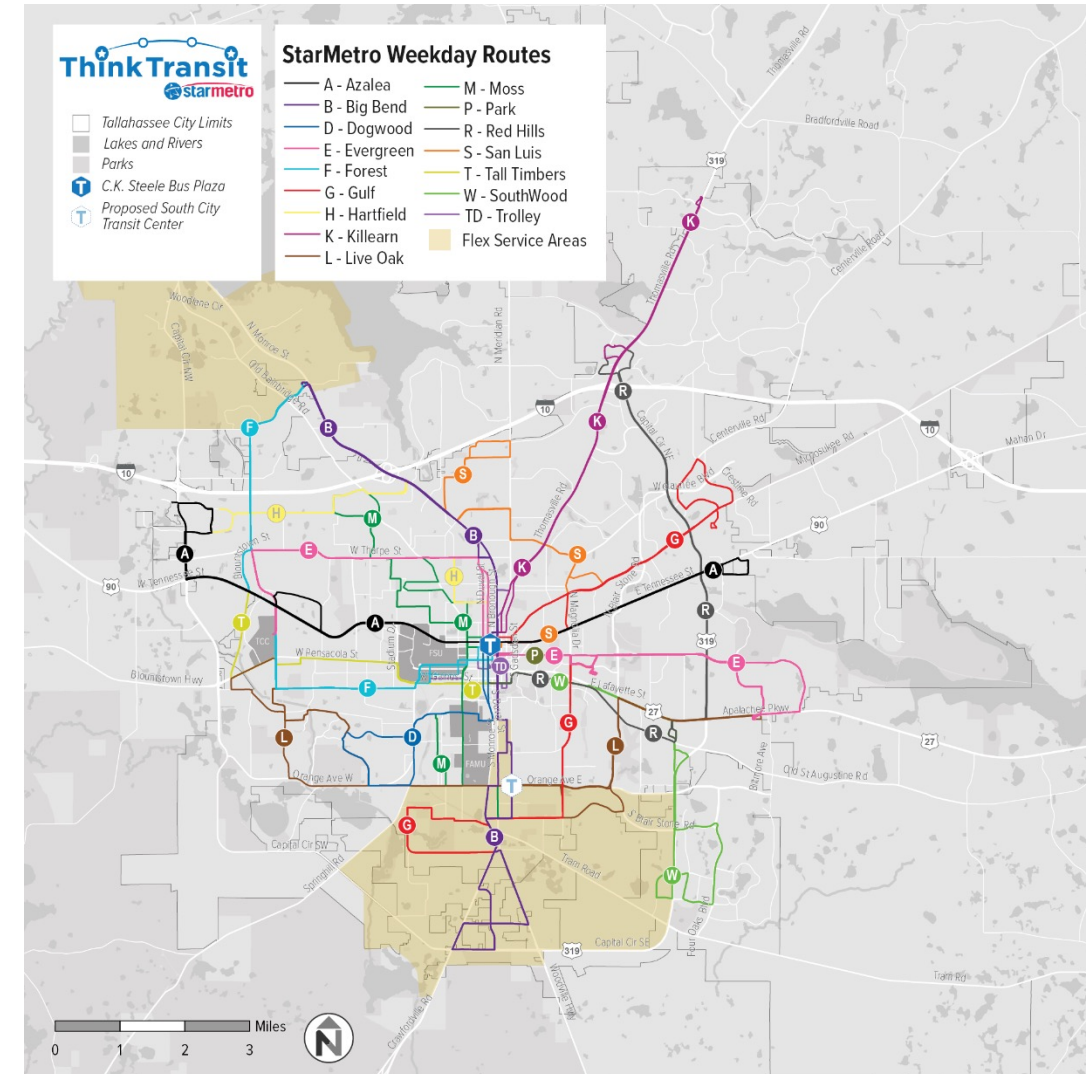
- **2** FLEX Service Areas
- Downtown Trolley Routes
- Dial-A-Ride Shuttle

Operations

- **7** days a week
- **30 to 60 -minute** headways in peak
- Service start: **6am**
- Service end: **11pm**
- **\$1.25** per ride
- **Free** transfers

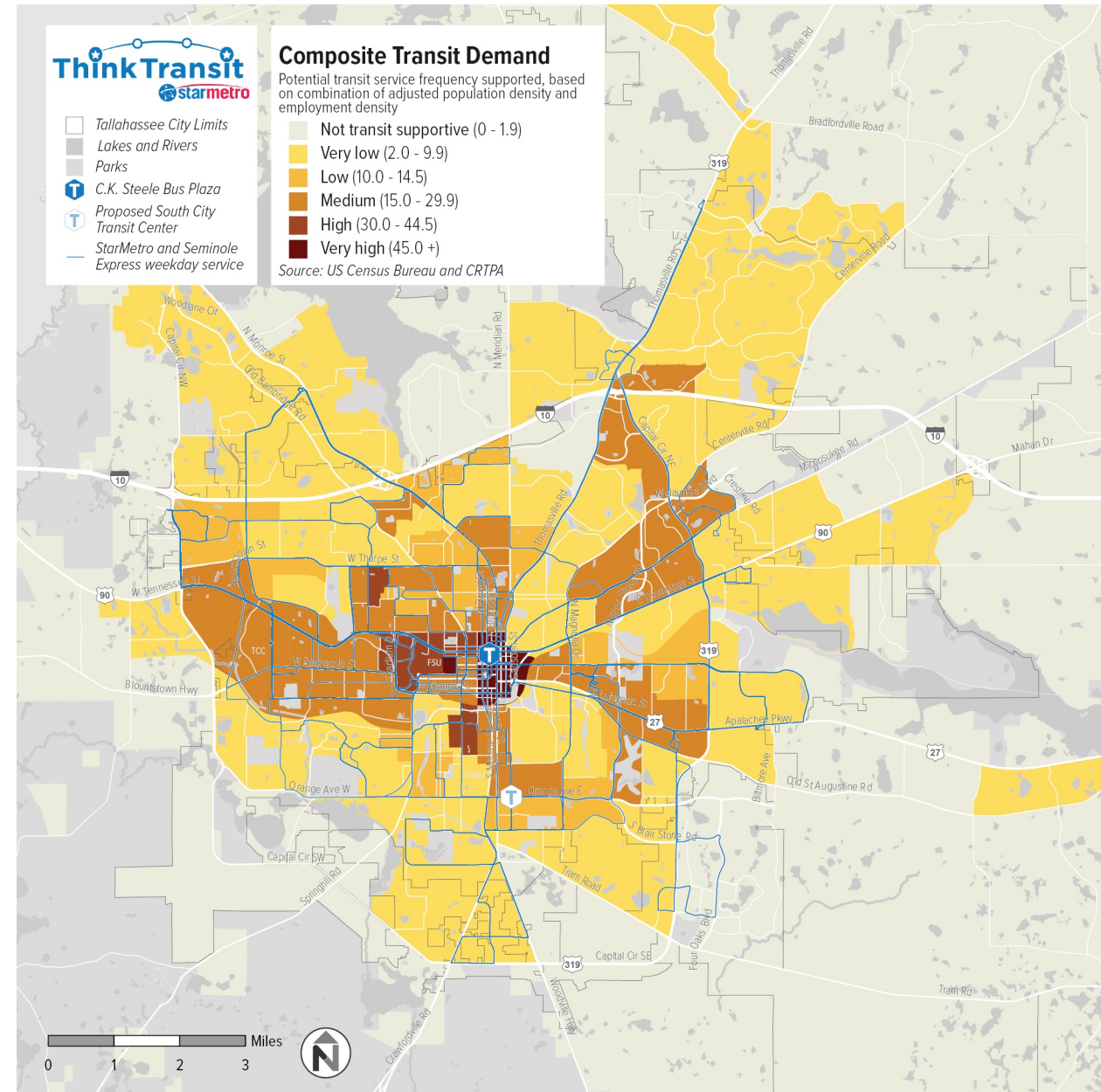
StarMetro: Existing System

- Service is focused on getting people in and out of downtown Tallahassee
- Corridor oriented routes
 - Azalea
 - Big Bend
 - Forest
 - Evergreen
 - Tall Timbers
- Neighborhood oriented routes
 - Moss
 - Flex Routes



StarMetro: COA

- Focused on short-term improvements
- Considering:
 - When bus service is available (days/times)
 - Where bus routes go (destinations)
 - How often bus service comes (frequency)
 - How bus routes work together (connections)
 - Bus route paths (directness of service)

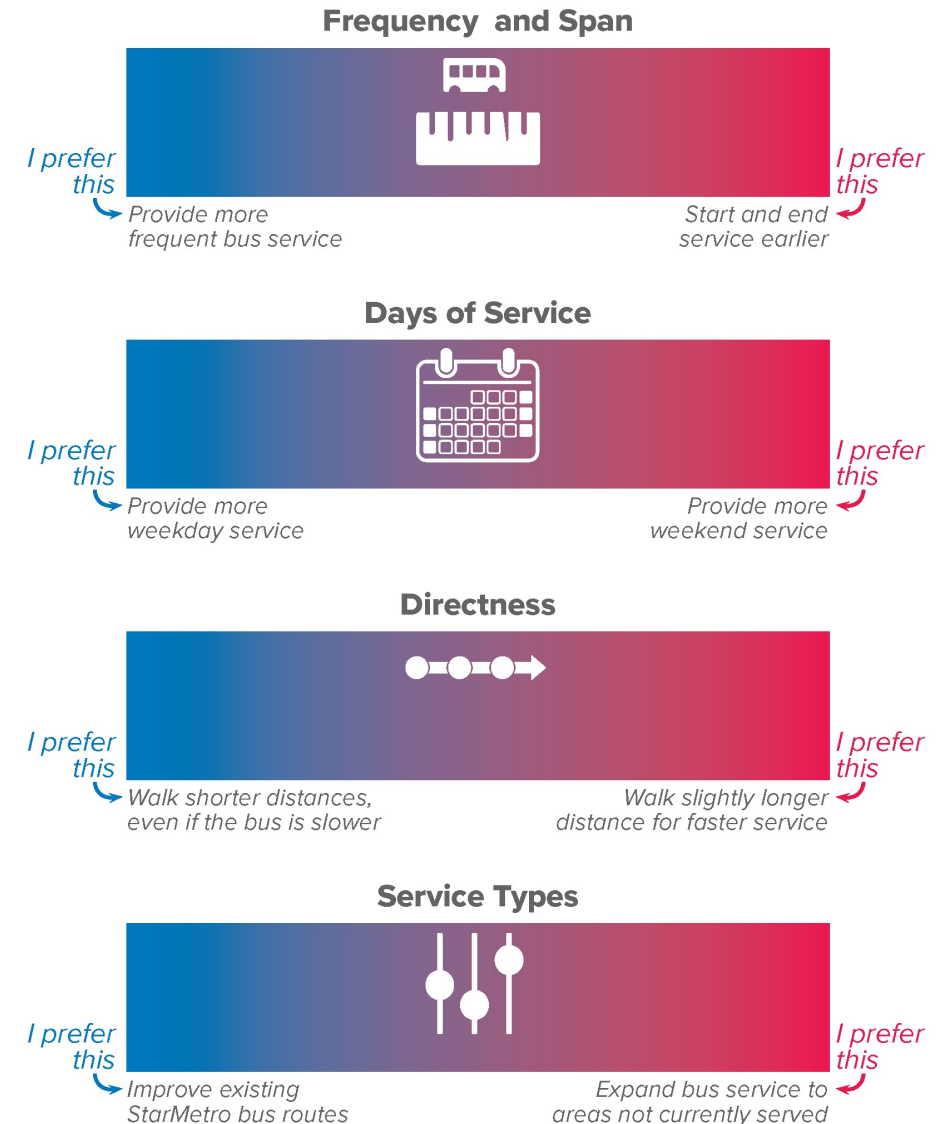


Choices and Trade-Offs

- There are different ways that we can design bus service, but they require making a choice.

What Do You Like Best?

(Place a dot along the color bars, based on the strength of your preference)

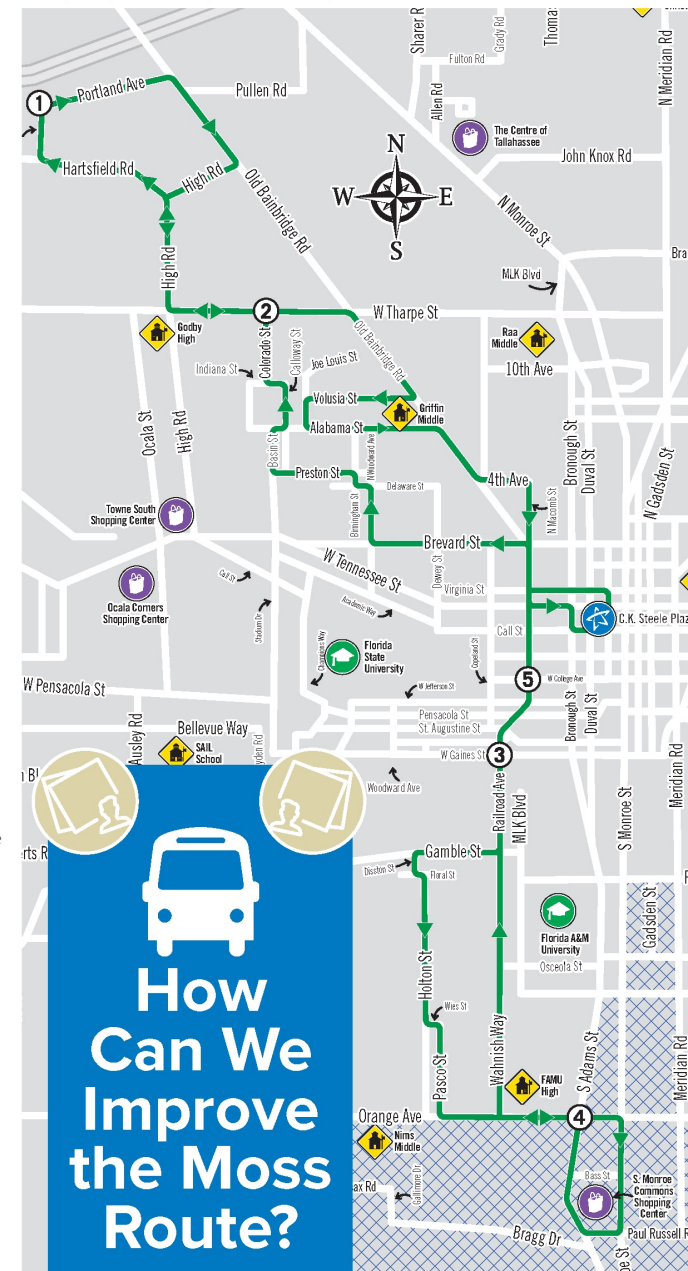


Moss Route

- Ideas for improving Moss Route

M Moss Route (Mon-Fri)

Frenchtown, C.K. Steele Plaza, Bond Community, Orange Ave.
Monday - Friday (5:08 a.m. - 7:30 p.m.) | Bus comes every: 30 min



Next Steps

- This week:
 - Rider survey
 - Meetings and Pop-ups
- Use comments and input to develop ideas for service improvements
 - Share draft recommendations (late 2021)
- Finalize recommendations late 2021/early 2022

